

Saturn Production Helper

A cost effective way to share production data and help eradicate potentially expensive and embarrassing assembly and inspection errors.

PHelp will help you to reduce time-to-market, training and inspection times and complicated documentation.

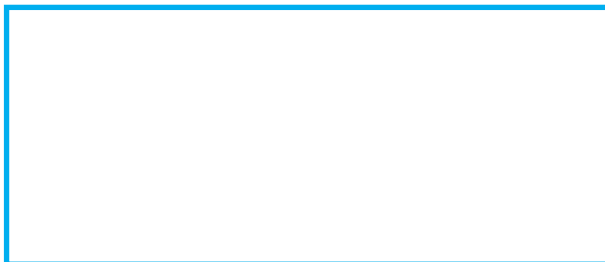
FREE READER

The PHelp reader is free to all who wish to use it. Simply direct your Internet browser to www.saturnsolutions.co.uk, select **PHelp** from the menu and download the reader. We have a number of demonstration databases that you can download to get a feeling for how PHelp can start helping your business now!

Alternatively contact Saturn Solutions for your free PHelp reader CD.

**Telephone +44 (0) 1303 248634 or
Email software@saturnsolutions.co.uk**

Distributor / Contact



We understand the needs of a modern specialist manufacturing company - we are one!

- Step-by-step assembly guidance
- Select parts from list or graphic
- Free PHelp data reader
- Sort parts by designator, description or value
- Filter and sort parts by procedure
- Notes section for each part
- Notes section for each procedure
- Internal parts image library
- Image 'Zoom' and 'Scroll' facility
- Import and export to Stock Explorer III
- Import rtf notes for each part or procedure
- Import jpg, emf and bmp images
- Import and export to Excel and CSV
- Touch-screen and mouse compatible
- Easily share data with contractors
- Exceptionally easy and intuitive
- Fully searchable and context sensitive help
- PC Compatible, Win 98, ME, NT, 2000, XP

SATURN SOLUTIONS LTD.



Ingles Yard
Jointon Road
Folkestone
Kent
CT20 2RY

Tel: +44 (0) 1303 248634
Fax: +44 (0) 1303 220315
Email: software@saturnsolutions.co.uk
Web Site: www.saturnsolutions.co.uk



SATURN SOLUTIONS LTD.

Do you Experience:

*Steep assembly learning curves?
Manual assembly errors?
Long visual inspection times?
Component validation errors?
Complicated documentation?*

You Need:



PHelp

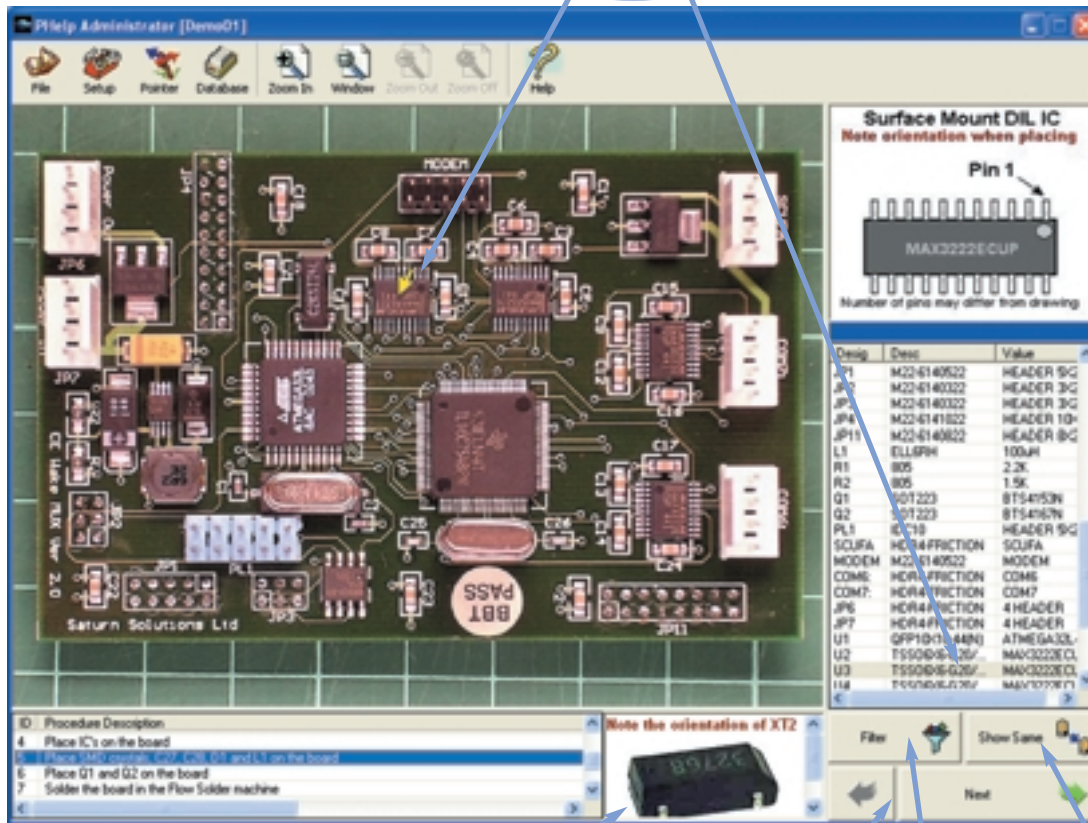
**PRODUCTION ASSISTANT
FOR MANUFACTURERS**

Saturn Production Helper

The efficient and intuitive interface allows you to select components from the parts list or the assembly image using either a touch screen or standard mouse.

No more "Now, where is that part?" nightmares. Simply select the part in the list and PHelp will show you where it is.

Fast and easy creation and editing of assembly databases that contain everything from the assembly image to positions of parts.



Notes for complex procedures or specialist parts are automatically shown when the procedure or part is selected and may be expanded to allow long notes to be read easily.

Step-by-step technology allows you to specify how **you** want your product to be assembled. The assembler simply has to press the "Next" button and follow the on-screen instructions.

Rapidly find parts of the same type to ease assembly.

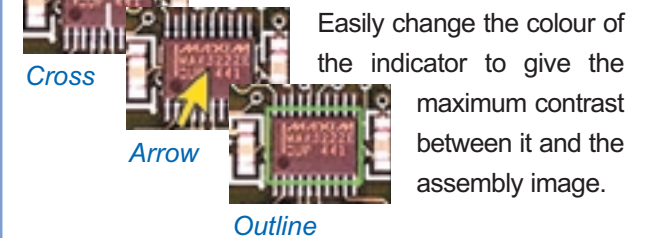
Filter parts by procedure and sort parts by Designator, Description or Value.

PHelp is designed to help assemblers correctly recognise and assemble parts into a product and inspectors to verify that parts have been correctly assembled. It can be used with standard (mouse and screen) or touch-screen technology and is easy to set up and use. It may be used with multiple workstations connected by any kind of shared local network. Simply put your assembly database on a shared path and it will be available for any workstation connected to the network.

Touch screen compatibility keeps workshop clutter to a minimum. No more mouse cables and keyboards taking up valuable space in the workshop.



Three different types of part indicator help pinpoint parts in an assembly.



The reader is **free** so you can make an assembly database and freely distribute it to your sub-contractor, knowing that they have the ability to read it. **No more lost BOM's or documents!**

Minimum System Requirements

- Pentium Processor or equivalent
- 32 MB RAM (128MB recommended)
- SVGA display (min 1024 x 768 res 16M colours recommended)
- 10MB of hard disk space (50MB recommended)
- Windows 98 and Internet Explorer 5.0 or later
- NT 4 SP5 or later and Internet Explorer 5.0 or later
- Windows Millennium Edition
- Windows 2000
- Windows XP